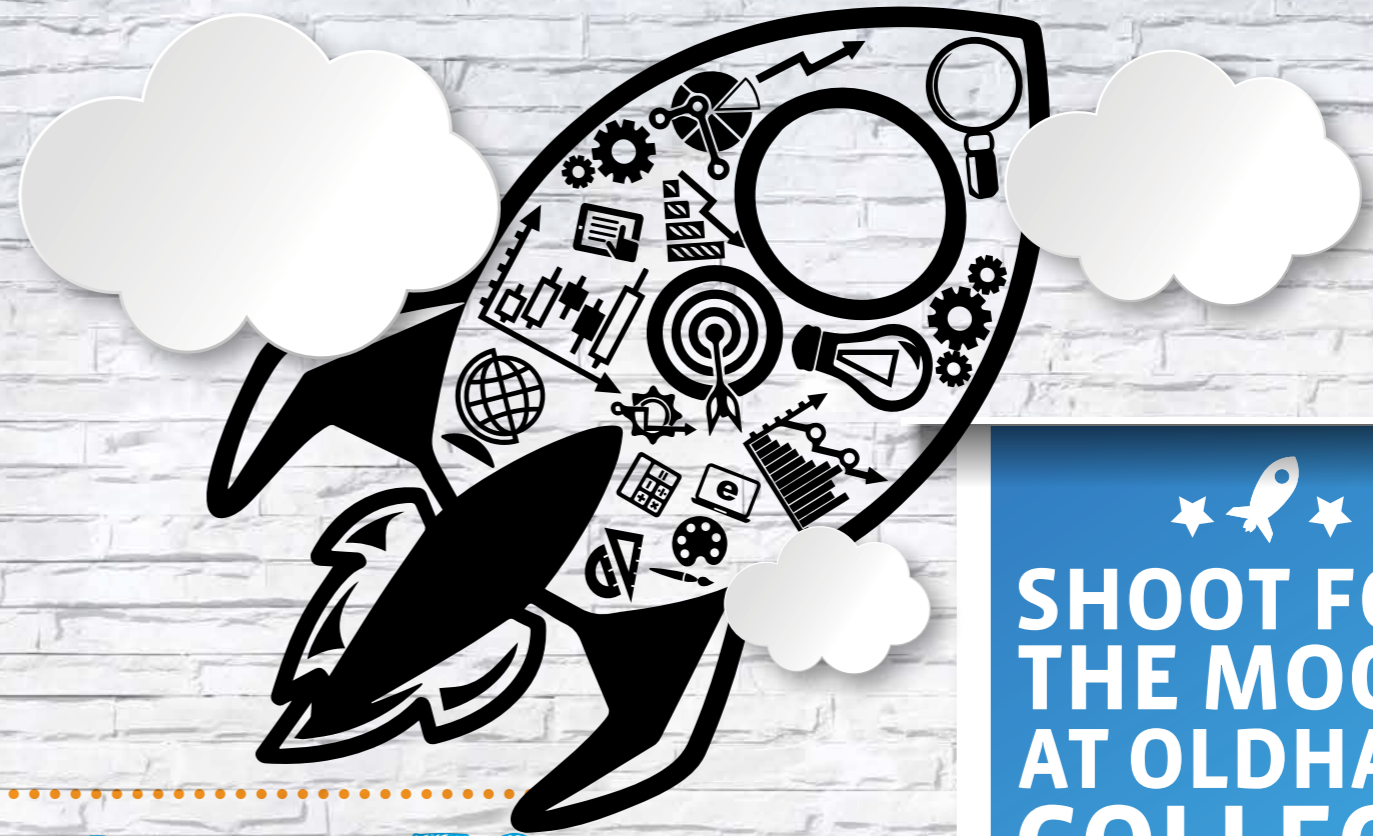




Oldham College



SHOOT FOR THE MOON AT OLDHAM COLLEGE

16-19 LEARNING PROGRAMMES

	High Achiever 1 Technical Awards 14-16	High Achiever 2 Development Studies	High Achiever 3 Technical Certificates	High Achiever 4 Applied General/Technical Level Qualifications Technical Baccalaureate
Funding arrangements	Day pay from school	Funded	Funded	Funded
Entry Requirements	Desire to work within a specialist area/sector	NA	3 GCSE A* -D	4 GCSE A* -C
Vocational route	Technical awards	L1 and below specialist qualification and employability	Specialist vocational pathways	Sector/specialist vocational pathways
Academic route	Core subjects in school	Improving maths and English	English, maths and employability	Technical baccalaureate [Level 3 maths, extended project and applied/technical qualification]
Apprenticeship	No	Traineeship	Apprenticeship L2	Advanced apprenticeship
Work experience	No	Significant amount during the study programme	5 days	5-10 days
Progression	Pathway 2, 3 or apprenticeship	Pathway 3 Apprenticeship Work	Pathway 4 Advanced apprenticeship or Work	Higher education Advanced apprenticeship Work
Duration	2 years	Individual to student progress	1 year	Up to 2 years
Purpose	Preparation for work in a specialism or sector	Preparation for work and life	Preparation for work or higher level study	Preparation for higher education or work